

empowering  
people.

# The

# buildOn

75319  
\$0.00

Vol 0001, I . . . . No. 1

© 2009 The buildOn. SATURDAY, FEB.

28, 2009.



© A PHOTO FROM DWAG. FOR THE buildOn.

- buildOn members worked to address hunger in our community.

**Am. Shift:** 9am - 1pm.

**Pm. Shift:** 12pm - 3:30pm.

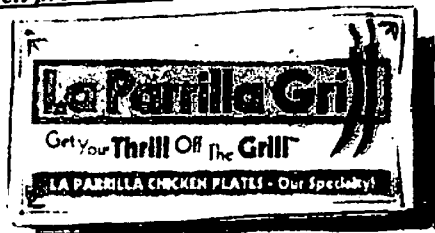
20 High Schools  
coming together  
to end hunger in  
the bay area.

**N**early 150,000 people in  
San Francisco live with the  
threat of hunger.

The San Francisco Food Bank exists to provide hope. They depend on volunteers like you. Join them in the fight to end hunger. Projects typically involve sorting donations from food drives and grocery stores, repacking bulk items into more useful portions, cleaning and boxing fresh produce, or stocking grocery shelves. In a single shift, you can work with food that will impact thousands throughout San Francisco.

*By: Sara Sullivan*

- Lunch provided by:



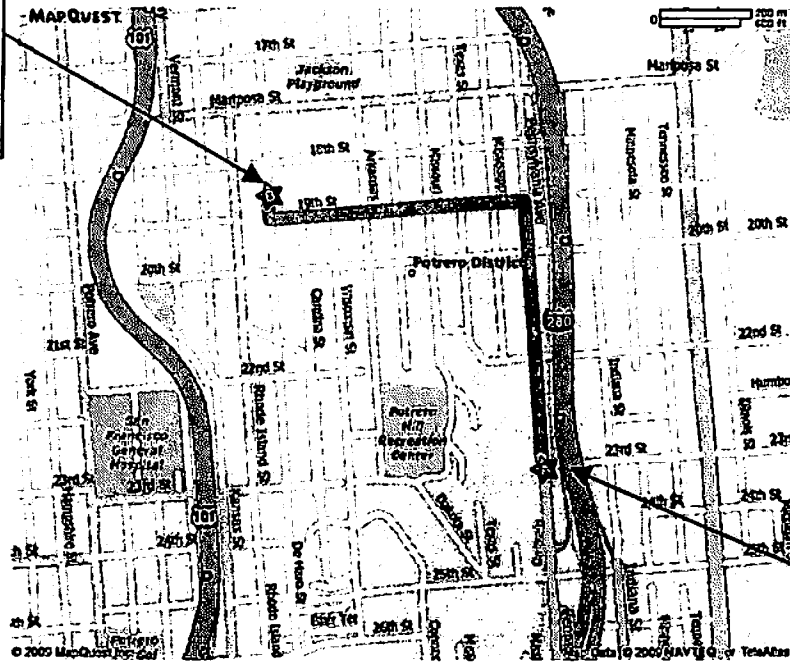
- Always serves our community: -

Address: < food Bank >  
400 Pennsylvania  
Ave. S.F. CA.  
94107.

Text: Call Sara 925.247.1100

# Public Transportation and Driving Directions

International Studies Academy  
655 De Haro between  
18<sup>th</sup> and 19<sup>th</sup>



SF Food Bank  
900 Pennsylvania  
at 23rd

## Public Transportation to the SF Food Bank

**Option 1:** Enter any MUNI station between Castro and Embarcadero & take MUNI K/T Line towards 3rd St./City College.

- Get off at the corner of 3rd Street and 23rd Street.
- Walk west on 23rd Street (away from the Bay) approx. three blocks until it dead-ends into Pennsylvania Avenue.
- The Food Bank is in front of you and slightly to the left.

**Option 2:** Take CalTrain and get off at the 22nd Street station.

- Turn left on 22nd Street, then turn left again on Pennsylvania Avenue.
- Walk one long block to 23rd and Pennsylvania and the Food Bank will be on your right, just past the stop sign.

**Option 3:** The MUNI 48 Line stops at 22nd Street and Pennsylvania Avenue. (connects from 24<sup>th</sup> Street & Mission BART)

- Walk south (away from the hill) one block on Pennsylvania to 23rd Street. & The Food Bank is on the right, just past the stop sign.

**Option 4:** The MUNI 22 Line stops at 18th Street & Pennsylvania Avenue. (connects from 16<sup>th</sup> Street & Mission BART)

- Walk south (away from downtown) on Pennsylvania to 23rd Street & The Food Bank is on the right, just past the stop sign.

## Driving Directions

*If you are driving, please consider carpooling with students or adults.*

**From Highway 101 Northbound:**

- Exit at Cesar Chavez Street. From the right exit lane, follow signs to Cesar Chavez East.
- Turn left onto Pennsylvania Avenue & continue until you reach 23rd Street. The San Francisco Food Bank is on your left.

**From Highway 280 Northbound:**

- Exit at Cesar Chavez Street. Cross Cesar Chavez Street onto Pennsylvania Avenue.
- Turn left onto Pennsylvania Ave and continue until you reach 23rd Street. The San Francisco Food Bank is on the left.

**From Highway 280 Southbound:**

- Exit at Cesar Chavez Street/25th, and immediately turn right on Pennsylvania Avenue.
- Continue until you reach 23rd Street. The San Francisco Food Bank is on the left.

## Driving Directions to ISA from the SF Food Bank

- Go north on Pennsylvania towards 22<sup>nd</sup> Street and turn left onto 19<sup>th</sup> Street & turn right onto De Haro Street

## MUNI to International Studies Academy (ISA)

**Option 1:** MUNI 10 towards De Haro and 17<sup>th</sup> Street.

- Get off at the corner of 17<sup>th</sup> and De Haro. Walk up De Haro and ISA will be on your left.

**Option 2:** MUNI 53 towards Connecticut and 18<sup>th</sup> Street

- Get off at Vermont and 18<sup>th</sup> Street & walk south along Vermont & turn left onto 18<sup>th</sup> Street and turn right on De Haro.

**Option 3:** MUNI 19 towards Manseau St & Hussey St

- Get off at Rhode Island and 19<sup>th</sup> Street. Walk east along 19<sup>th</sup> Street and turn left at De Haro (1<sup>st</sup> left turn).

**Option 4:** MUNI 22 to 17<sup>th</sup> and De Haro. Walk along De Haro one block to ISA.

# buildOn

Dear Parent or Guardian:

buildOn is an international non-profit organization whose mission is to enhance education for high school students in the United States while providing people of developing countries the opportunity to increase their self-reliance through education. To accomplish this mission, buildOn has set up the Global Action Program, which allows students to help sponsor the construction of schoolhouses in developing countries around the world, while also providing valuable services in their own communities. We are happy to say that your student is a member of the buildOn Program at his/her school and is assisting the less fortunate here in the United States and overseas.

Currently, buildOn supports after-school programs in 20 schools throughout the San Francisco Bay Area. Many weekends per year, students from these schools unite behind a common cause: taking action to better our community and develop their leadership skills. Weekend projects range from service projects such as tree planting, painting over graffiti, or sorting food at a food pantry to attending cultural events, exhibits, and festivals, to fundraising activities such as car washes. These weekend projects are a great way for your student to help make a difference, earn community service hours, do something positive with their free time, and meet students from other Bay Area schools who also know they have the power to change the world.

In order for your student to participate in the current buildOn project, we will need you to read, complete and sign the attached form and have your student return the form to their Program Coordinator or Teacher Advisor prior to the project or bring it with them to the project in order for them to participate.

Thank you for your support. Should you have any questions, feel free to contact any team member via the information below.

Thanks again and we look forward to engaging your student in our community throughout the school year!

Sincerely,

buildOn California (San Francisco Bay Area) Team:

Angel Riepe, CA Program Supervisor • 415.296.5012 • [angel.riepe@buildon.org](mailto:angel.riepe@buildon.org)

Alicia Loewenthal, Program & Lead Coordinator • 415.296.5018 • [alicia.loewenthal@buildon.org](mailto:alicia.loewenthal@buildon.org)

Ashley Shult, Program & Trek Coordinator • 415.296.5014 • [ashley.shult@buildon.org](mailto:ashley.shult@buildon.org)

Tom Silverman, Program & Trek Coordinator • 415.296.5016 • [tom.silverman@buildon.org](mailto:tom.silverman@buildon.org)

Sara Guillermo, Program & Service Coordinator • 415.296.5002 • [sara.guillermo@buildon.org](mailto:sara.guillermo@buildon.org)

Selena Granados, Program Coordinator • 415.296.5004 • [selena.granados@buildon.org](mailto:selena.granados@buildon.org)

---

buildOn \* 225 Bush Street, Suite 1330 \* San Francisco, CA 94104

FAX: 415.296.5001 \* [www.buildon.org](http://www.buildon.org)



**Service Project Description:** Regional Service Project at San Francisco Food Bank  
**\*\*Buses will pick up East Bay Schools as described on flyer\*\***

**Project Date:** 2/28/09

Dear Parent or Guardian,

Please read the permission, release and disclaimer statements below. If you agree to the terms set forth below, please sign your name and fill out the information where indicated below and have your child/ward return it to their program coordinator or teacher advisor prior to the project or bring it with them to the project.

**Permission:**

I give permission for my child/ward to participate in the project described above and all related activities. I authorize buildOn, Inc. to use written or oral quotations, photographed, filmed, taped or electronically recorded images of my child/ward by any media, platform or format, without restriction in connection with my child/ward's participation in buildOn's programs and projects. In case of emergency, I give permission to buildOn to enlist the help of medical professionals. I understand buildOn will try to reach me. If I cannot be reached, I give permission to the medical personnel selected by buildOn to hospitalize and secure proper treatment (e.g. order injections, anesthesia or surgery) for my child/ward.

**Release:**

I hereby release and hold harmless buildOn, its officers, directors, employees, volunteers, advisors, successors and assigns and the California State Board of Education and its members, officers, employees and agents from any and all claims, causes of action, liabilities, costs, expenses, or damages of any kind whatsoever, as a result of, or in connection with the project and related activities.

**Disclaimer:**

I understand and agree (1) that buildOn is not responsible for the personal property of participants, (2) buildOn staff is not certified or trained to give medical treatment, and (3) buildOn is not responsible for participants during transit to and from the project location.

Your child's name: \_\_\_\_\_ Your child's school: \_\_\_\_\_

Parent/Guardian name: \_\_\_\_\_

Parent/Guardian signature: \_\_\_\_\_

Date: \_\_\_\_\_ Parent/Guardian phone number: \_\_\_\_\_

Emergency contact name and phone: \_\_\_\_\_